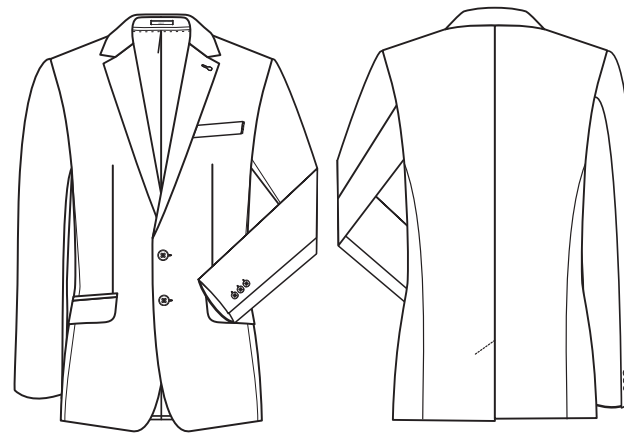


PREMIUM Regular Fit



STYLE 1116



GERMAN

HERREN-SAKKO

- Regular Fit
- 2-Knopf
- 2 Pattentaschen
- 1 Brustleistentasche
- Traveller Innenausstattung
- Rückenschlitz
- Rückenlänge 76 cm | Gr. 50
- **GRÖSSEN:** 44-62, 90-110, 25-28

ENGLISH

MEN'S JACKET

- regular fit
- 2-button
- 2 flap pockets
- 1 breast welt pocket
- traveller features inside
- back vent
- back length 76 cm | size 50
- **SIZES:** 44-62, 90-110, 25-28

FRENCH

VESTON HOMME

- Regular fit
- 2 boutons
- 2 poches à rabat
- 1 poche poitrine
- Détails intérieurs voyage
- Fente de dos
- Longueur dos 76 cm | taille 50
- **TAILLES :** 44-62, 90-110, 25-28

DUTCH

HEREN COLBERT

- regular fit
- 2 knoops
- 2 klepzakken
- 1 borstzakje
- traveller uitvoering binnenzijde
- rugsplit
- ruglengte 76 cm | maat 50
- **MAAT:** 44-62, 90-110, 25-28

NR: 1116.666.110 SCHWARZ
NR: 1116.666.111 ANTHRAZIT
NR: 1116.666.120 MARINE
NR: 1116.666.121 MIKRODESSIN BLAU
NR: 1116.666.125 ROYALBLAU

NO: 1116.666.110 BLACK
NO: 1116.666.111 ANTHRACITE
NO: 1116.666.120 NAVY BLUE
NO: 1116.666.121 MICRO PATTERN BLUE
NO: 1116.666.125 ROYAL BLUE

RÉF : 1116.666.110 NOIR
RÉF : 1116.666.111 ANTHRACITE
RÉF : 1116.666.120 BLEU MARINE
RÉF : 1116.666.121 BLEU FONCÉ À MOTIFS
RÉF : 1116.666.125 BLEU ROI


NR: 1116.666.110 ZWART
NR: 1116.666.111 ANTRACIET
NR: 1116.666.120 MARINE
NR: 1116.666.121 MICRO DESSIN DONKERBLAUW
NR: 1116.666.125 KONINGSBLAUW

GEWEBE: 60% Schurwolle, 36% Polyester, 4% Elasthan, 200 g/m²
FUTTER: 100% Polyester

PFLERGE:     








FABRIC: 60% virgin wool, 36% polyester, 4% elastane, 200 g/m²
LINING: 100% polyester

CARE:     



TEXTILE : 60 % laine vierge, 36 % polyester, 4 % élasthane, 200 g/m²
DOUBLURE : 100 % polyester

ENTRETIEN :     



DOEK: 60% scheerwol, 36% polyester, 4% elastaan, 200 g/m²
BINNENVOERING: 100% polyester

ONDERHOUD:     

