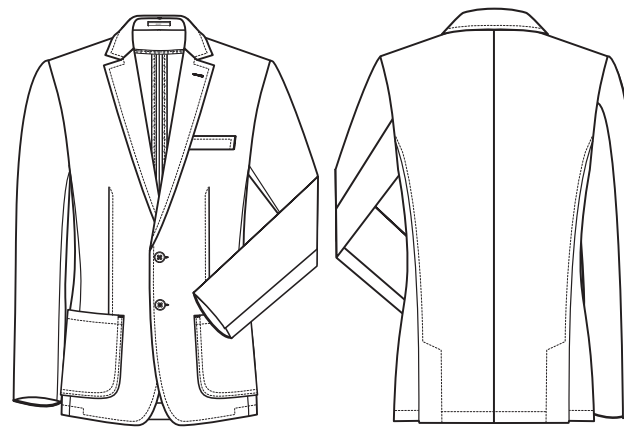


CASUAL

Regular Fit

NEU



STYLE

1131



GERMAN

HERREN-JERSEYSAKKO

- Regular Fit
- 2-Knopf
- 2 aufgesetzte Taschen
- 1 Brustleistentasche
- 2 Innentaschen
- Zierstepp
- Seitenschlitze
- Kontrast-Armfutter
- Rückenlänge 71 cm | Gr. 50
- **GRÖSSEN:** 44-62

NR: 1131.2110.016 GRAU MELIERT

ENGLISH

MEN'S JERSEY JACKET

- regulat fit
- 2-button
- 2 patched pockets
- 1 breast welt pocket
- 2 inside pockets
- decorative topstitching
- side vents
- contrast arm lining
- back length 71 cm | size 50
- **SIZES:** 44-62

NO: 1131.2110.016 GREY MOTTLED

FRENCH

VESTON JERSEY HOMME

- Regular fit
- 2 boutons
- 2 poches plaquées
- 1 poche poitrine
- 2 poches intérieures
- Surpiqûres
- Fentes de côté
- Doublure de manche contrastante
- Longueur dos 71 cm | taille 50
- **TAILLES :** 44-62

RÉF : 1131.2110.016 GRIS CHINÉ

DUTCH

HEREN JERSEY COLBERT

- regulat fit
- 2 knoops
- 2 opgezette zakken
- 1 paspel borstzakje
- 2 binnenzakken
- siernaad
- zijsplit
- arm gevoerd met contrasterende stof
- ruglengte 71 cm | maat 50
- **MAAT:** 44-62

NR: 1131.2110.016 GRIJS MELANGE

GEWEBE: 37% Baumwolle, 63% Polyester, 300 g/m²

FABRIC: 37% cotton, 63% polyester, 300 g/m²

TEXTILE : 37 % coton, 63 % polyester, 300 g/m²

DOEK: 37% katoen, 63% polyester, 300 g/m²

PFLERGE:

CARE:

ENTRETIEN :

ONDERHOUD:



Stretch



Machine Washable



Stretch



Machine Washable



Stretch



Machine Washable



Stretch



Machine Washable